

# GETTING STARTED

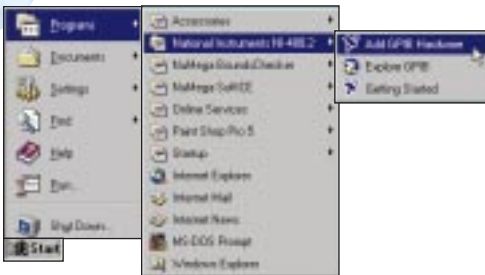
1

Insert CD, then choose Install NI-488.2 Software for Windows.



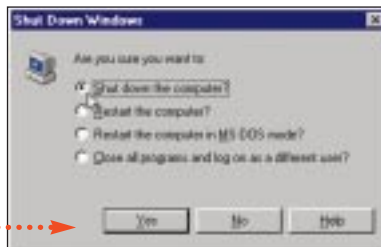
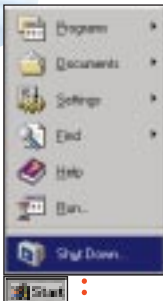
2

Run Add GPIB Hardware Wizard.



3

Shut down, then power off computer.

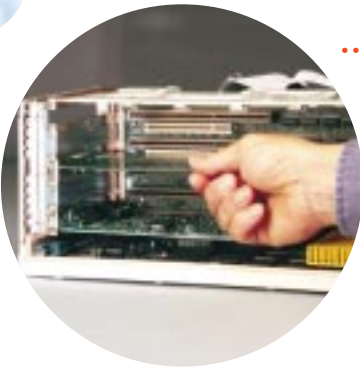


Power Off  
Computer

(Continued)

# 4

Install hardware\*, then power on computer.



**Power On  
Computer**

\* **For Help** installing your hardware, refer to the GPIB Hardware Guide (available on the CD through View Documentation).

# 5

Run NI-488.2 Getting Started Wizard.



[www.natinst.com/support/](http://www.natinst.com/support/)  
[support@natinst.com](mailto:support@natinst.com)

Tel: (512) 795-8248 • Fax: (512) 683-5678  
Fax-on demand: (512) 418-1111 • [ftp.natinst.com](ftp://ftp.natinst.com)



020899

3222266A-01